

Technical Data Sheet

Caché[®] CA6, CA10, CA15, CA20, CA30 & CA40

Toiletries and Cosmetic additives

Special features

- Highly monosized particles
- Cross-linked PMMA particles
- Perfect spherical shape
- Sheer / transparent
- Creamy and smooth feel
- Light diffusing properties

Properties

The monosized spherical PMMA particles available in sizes from 6-40 microns provide unique ball bearing effect (easy to apply smoothly) and give a natural product finish on the skin. Because of the uniform size all particles are active and give uniform light diffusing properties and secure a silky texture.

Caché[®] CA products cover up for wrinkles in combination of maintaining the characteristic look and lines in the skin ("Optical blurring"). It is easy to obtain different degrees of matting effects.

Typical application

- Emulsion products like creams and foundations
- Wrinkle and line minimizers
- Nail lacquers
- Lip sticks

Good solvent resistance – No formulation instabilities

High added value – low cost

Low quantity added as a result of the narrow size distribution (all particles active) means a lower cost.

Large scale manufacturing capacity

Large scale manufacturing gives competitive prices and a reliable supply of products.



Inventory/FDA status

All components are registered in the TSCA and DSL inventories.

Technical data

Caché [®] CA	D _{mean} [μm]	CV [%]
CA6	6	<5
CA10	10	<5
CA15	15	<5
CA20	20	<5
CA30	30	<5
CA40	40	<5

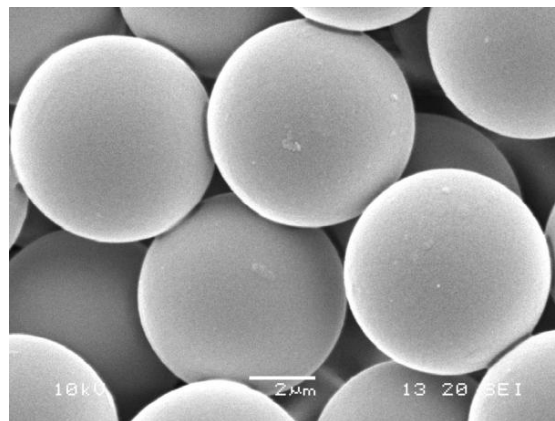
The CV of the main particle population is typically 1-3 %

Particle properties

Refractive index	1.48-1.52
Particle density	1.2 g/cm ³
Residual monomer	0 ppm

*No residual monomer gives: - No odour
- No skin irritation problem*

Clean and smooth surface:



Perfect spherical shape:

