

Technical Data Sheet

Spheromers[®] CA6, CA10, CA15, CA20, CA30, CA40 & CA50

Texture scratch resistance additives

Special features

- Monosized particles
- Uniform texture
- Crosslinked PMMA particles
- Improves scratch resistance
- Matting/gloss control
- Smooth feel

Properties

The monosized spherical particles provide especially fine and uniformly textured films. They can give improved scratch resistance and impart a permanent slip improvement. Spheromers[®] particles have a low refractive index, which gives the opportunity of producing matt or textured clear coats without imparting haze to the coatings. The crosslinked polymer particles are inert in all coatings. The Spheromers[®] particles can be combined with both other size Spheromers[®] particles or matting agents to give the required texture, gloss and structure.

Typical applications

In solvent based, water-borne, powder, UV and EB formulations for

- Decorative coatings
- Coil coating
- Specialty packaging
- Mobile phones
- Automotive – interior
- Machinery Housing
- Wood coatings
- Optical coatings
- Metallic coatings

Recommended addition

0.25-5 % depending upon particle size.

Method of addition

Post addition with good and sufficient mixing (high shear).

Solubility

Inert in most solvents. No swelling or shrinkage.

Inventory/FDA status

All components are registered in the TSCA and DSL inventories.

Technical data

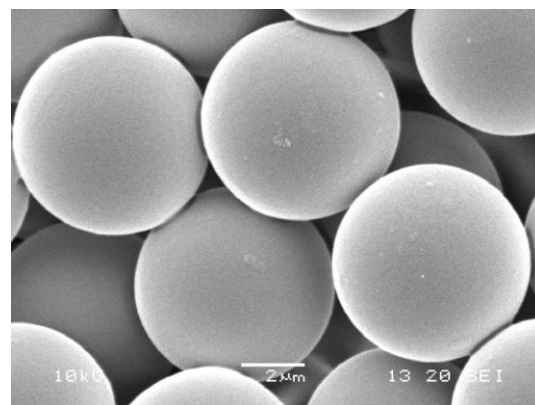
Spheromers [®]	D _{mean} [μm]	CV [%]
CA6	6	<5
CA10	10	<5
CA15	15	<5
CA20	20	<5
CA30	30	<5
CA40	40	<5
CA50	50	<5

The CV of the main particle population is typically 1-3 %

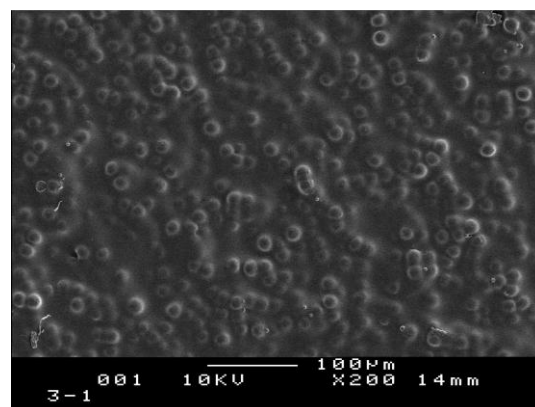
Particle properties

Refractive index	1.48-1.52
Particle density	1.2 g/cm ³

Clean and smooth surface:



Spheromers CA in a coating film:



Storage stability

Storage stability is at least 3 years from the date of production when stored dry at temperatures below 25° C in closed containers.